

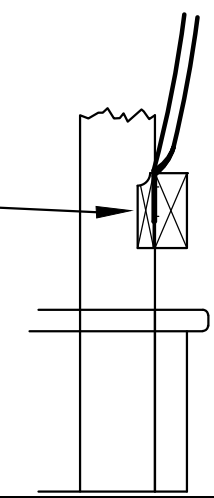
① Direct Fascia Mount Option, outside of rail

② 2x4 UPPER and LOWER RAILS, 4x4 posts inside of deck frame.

③ 2x6 upper or lower rail

④ Notched post top, brackets at bottom, for balusters in posts envelope.

1x4 cover board optional. Cove- or Bevel-routed edge recommended for slivers and visual appeal



MATERIAL: Metal Tubing				
FINISH: Steel: Galvanize Base. Steel and Aluminum: 3x Powder Coat 'Never Fade' UV glaze 20 yrs manufacturing defects 6 years NO-FADE 5 yr no corrosion 2 yr <1mi from ocean				
REV	DESCRIPTION	APP'D	DATE	
B	Updated	D.H.	4/11/17	
A	Released for Marketing	D.H.	9/14/97	
DIMENSIONS: Inches		TITLE: Metal Balusters Typical Rail Construction		DO NOT SCALE
CONVENTION: JOBSITE: Sun Harvesters LLC; Union Metalworks		PART / DRAWING No. RALCON100		